



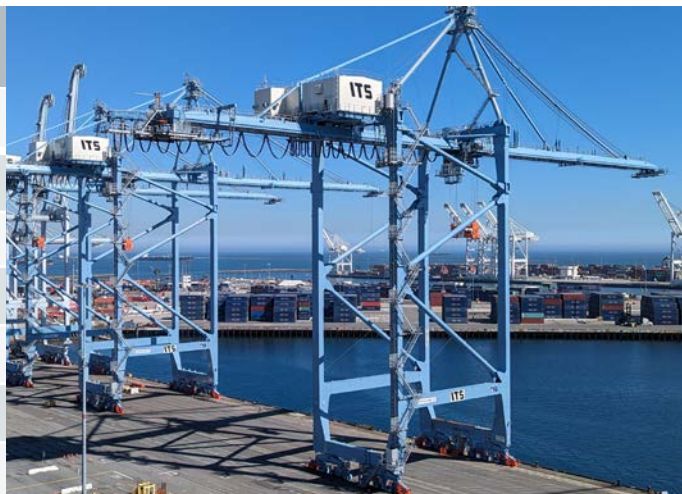
Handle Mega-Vessels

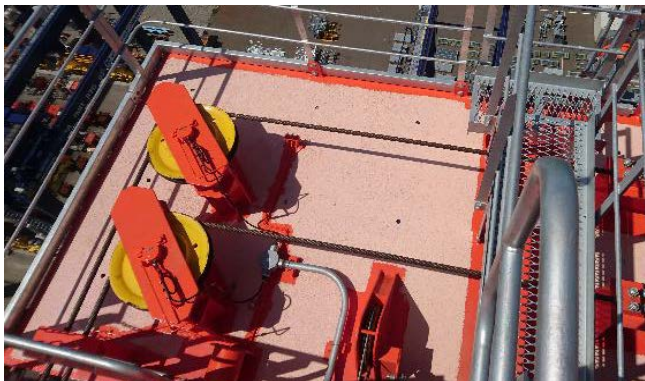
PORTAINER

The PACECO-MITSUI PORTAINER® features a lighter & rigid structural frame plus a maintenance friendly design. A PORTAINER crane with a lifting height of 175ft and 230ft (70m) outreach is approximately 1,500 tons dead weight. The PORTAINER crane eases maintenance tasks by centralizing main components & machinery at crane back-reach.

PACECO-Mitsui PORTAINER at-a-glance

Rated load	65 LT for twin-lift 50LT for single-lift
Outreach	230 ft (70m)
Lifting height	175ft (53m)
Hoist speed	90/180m/min
Trolley speed	240 m/min
Gantry speed	45m/min
Weight	1,500 tons





Environmentally Friendly

Reduction of hydraulic systems (Shear pin)

Electro-mechanical trim list skew system

No hydraulic systems on boom tip

Enhanced Safety

Spacious machinery house

Gantry anti-collision for crane to crane, vessel & objects

Container profiling, auto-stop & soft landing

Lock out switch to prevent accidental operation during maintenance.



High Productivity

Improved hoist speed

Anti-sway system

Semi-automation

Simplified Maintenance

Self-propelled trolley (no trolley ropes to change)

Wider boom / girder walkways

Easy access to gantry components

